

Raising the bar

Terminal Puerto Rosario sugar export with RAM Revolver CBH

Recently TPR posted on the social media platform LinkedIn a video of their success in bulk sugar export at the port in Rosario with the RAM Revolver Containerised Bulk Handling solution.



The video which can be viewed [here](#) taken by and posted on LinkedIn by TPR during their sugar, shows the simple process of the bulk sugar being loaded directly into the vessel by rotating spreader 'Revolver'; the sugar commodity destined for the USA.

Cameron Hay from RAM, on seeing the video commented that it was *“due to the fluctuating nature of harvest volumes, existing facilities often cannot cope. TPR is very clever in offering CBH to give clients a route to market Agri-bulk for bumper harvest years & higher profit for port”*

Container expert Gary Pinder said, *“So many products can be loaded with this system and a great diversification and benchmark in Argentina”*.

Replying to the comments, Leonard Feltrinelli, General Manager of TPR, said, *“we will keep raising the bar”*.

One of the first in America with Revolver CBH

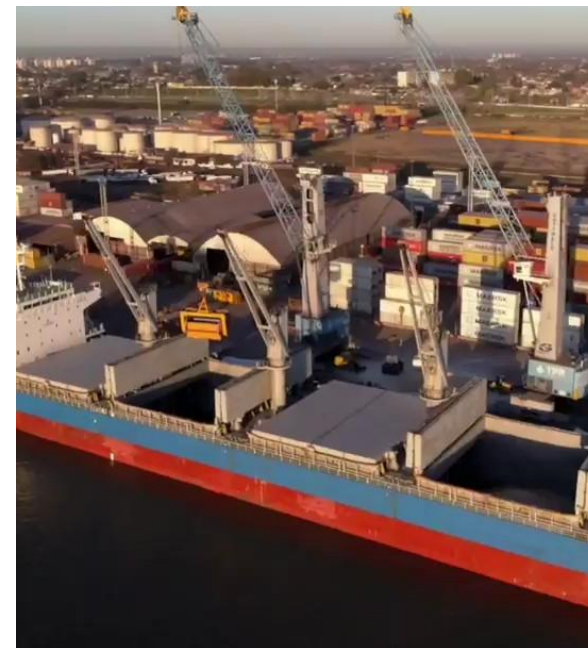
In 2016, TPR revolutionized the world of cargo and bulk storage by becoming the first port terminal in America to implement the Revolver CBH system.

Dry Bulk Magazine produced an in-depth article on TPR's grain export by using the Revolver CBH system. The terminal has been able to increase its grain handling and meet the needs of the growing South American Agri-bulk sector, without the need for capital investment in silos and bulk loaders. The results of which have turned it into a more profitable port.



TPR has since increased its cargo handling operations by 75% by incorporating new loading and unloading systems.

One of the most significant advantages of TPR is their ability to send and receive cargo by rail, which is an ideal partnership for the RAM Revolver CBH, which uses sealed containers as a mode of transport and storage by rail or by road.



Revolver CBH

A system using rotating spreader (Revolver) and open-top sealed containers designed for safe transport, storage and unloading of bulk commodities.

Sealing the container after loading, the commodity only sees the light of day immediately before decantation, reducing material loss significantly, with no contamination of commodity or the environment.

The area of Rosario is one of the largest and richest grain production areas and amongst the most industrialized regions in the country, with the port being the 2nd largest in Argentina and located 420km on the right bank of the Parana River.

TPR, located at Terminal 2, loads various types of cargo, such as auto parts, peanuts, vegetables, citrus, oil, wheat, and sugar and is the country's main exit for grain products.